



MONTHLY MEMBERSHIP PROGRESS REPORT

District 1 A

Results as of: 6/30/2015

GMT: THOMAS MATNEY

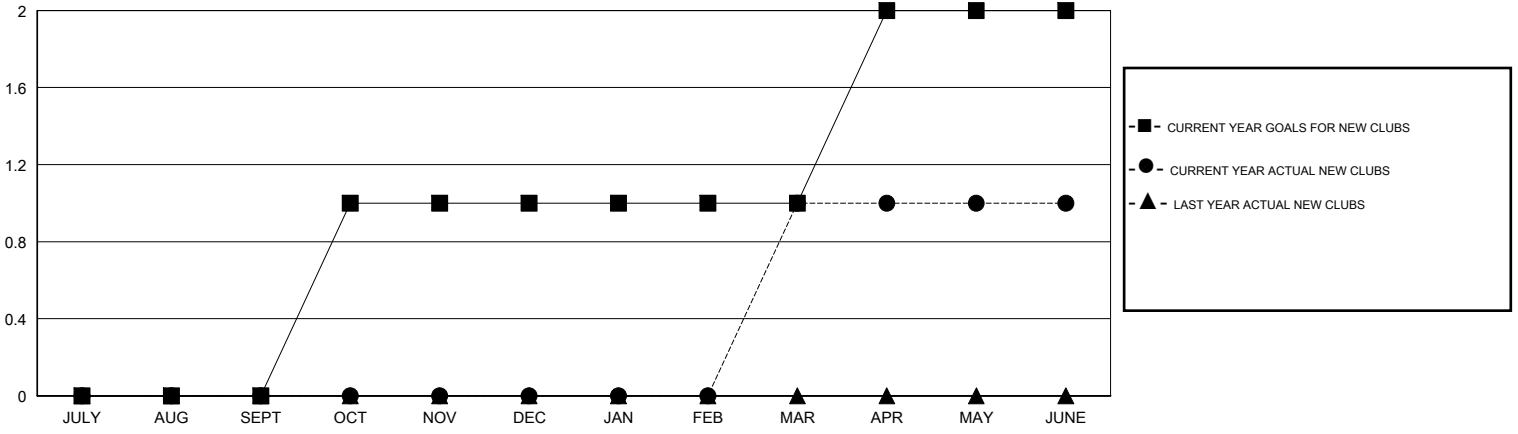
LOCATION ILLINOIS

GMT CA 1

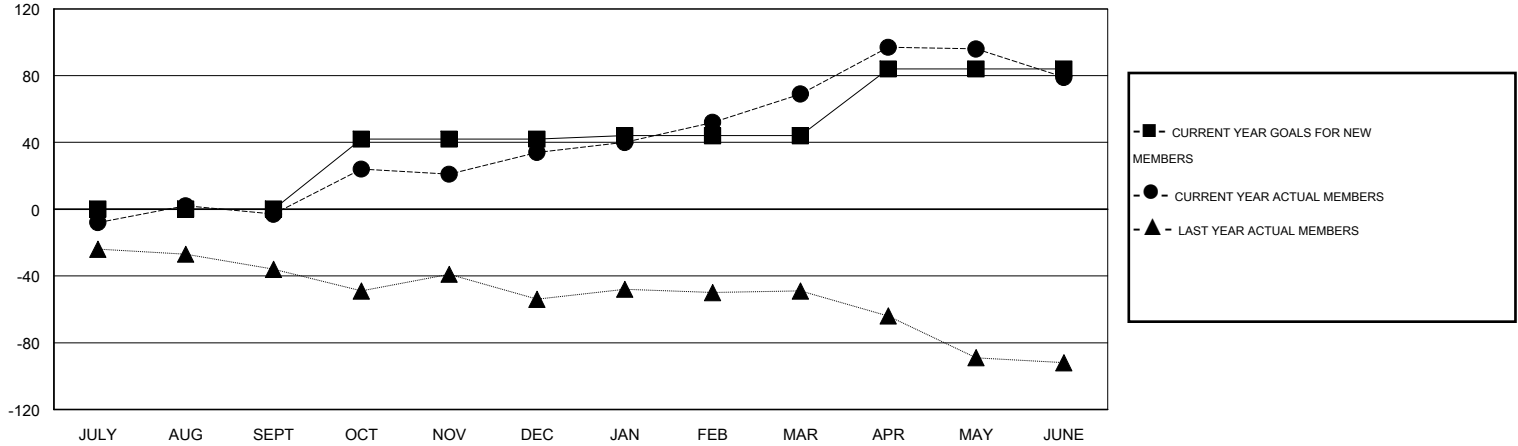
Clubs				
RESULTS FOR 2014-2015				
QUARTER	NEW CLUB GOAL	NEW CLUBS	DROPPED CLUBS	NET GAIN/LOSS
JULY/AUG/SEPT	0	0	0	0
OCT/NOV/DEC	1	0	0	0
JAN/FEB/MAR	0	1	0	1
APR/MAY/JUNE	1	0	0	0

Members				
RESULTS FOR 2014-2015				
QUARTER	NEW MEMBER GOAL	CHARTER AND NEW MEMBERS ADDED	DROPPED MEMBERS	NET GAIN/LOSS
JULY/AUG/SEPT	0	37	40	-3
OCT/NOV/DEC	42	82	45	37
JAN/FEB/MAR	2	56	21	35
APR/MAY/JUNE	40	72	62	10

GOALS AND ACTUAL NEW CLUBS CUMULATIVE



GOALS AND ACTUAL MEMBERS CUMULATIVE



DROPPED CLUBS: 0	47 CLUBS OF 72 ADDED 1 OR MORE NEW MEMBERS	<u>GENDER DISTRIBUTION</u>	
<u>DROPPED MEMBERS</u>		MALE	1,247 (68.59%)
DECEASED	23	FEMALE	571 (31.41%)
CLUB CANCELLED	0	<u>FAMILY UNIT MEMBERS</u> 413	
OTHER	145	<u>HEAD OF HOUSEHOLD</u> 192	
TOTAL	168	<u>NON-HEAD OF HOUSEHOLD</u> 221	

[CLICK HERE FOR HEALTH ASSESSMENT DATA](#)